



# INFRARED WIRELESS CONFERENCE SYSTEM

TS-820 / 920 Series

Professional, Practical, Pyramid-inspired  
Supporting smoother management of small  
to medium-scale conferences

Installation made easier than ever thanks to infrared  
system coupled with clear sound amplification.  
Wireless conference system provides flexible adaptation  
to diverse styles of conference.



# System Configuration / Components

## TS-920 Series



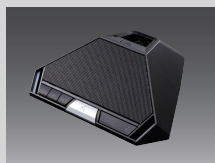
### TS-920RC Central Unit with recording function

- Main unit of the system
- Up to 192 conference unit controllable
- 2 x Mic In (Main/Sub), 3 x AUX In (Main/Sub/Main and Sub) Line Out, Rec Out, Headphone monitor out, EQ in/out
- Function setting – Number of open microphones, Auto mic-off function, Speech priority selector, Feedback suppressor
- Recording capability to USB and internal memory
- Voting result indicator
- Rack-mountable with MB-TS920 optional bracket



### TS-921 Chairman Unit

- Chairman unit for basic discussion
- Priority button
- Equipped with voting function
- 0.2W monitor speaker
- Audio monitoring switch (Main or Sub)
- 2 headphone jacks with individual volume control
- Approx. 10 hours continuous operation with the use of optional rechargeable lithium-ion battery



### TS-922 Delegate Unit

- Delegate unit for basic discussion
- Equipped with voting function
- 0.2W monitor speaker
- Audio monitoring switch (Main or Sub)
- 2 headphone jacks with individual volume control
- Approx. 10 hours continuous operation with the use of optional rechargeable lithium-ion battery

## Common Components (TS-820/920 Series)



### TS-904 Microphone (Long)

- Gooseneck microphone with one flexible section
- Unidirectional electret condenser microphone
- Red lights ring to display talk released
- XLR-4-32 connector
- Sensitivity:-37 dB (1 kHz, 0 dB = 1 V / PA)
- Frequency response: 100 Hz - 13 kHz
- Length: 518 mm



### TS-924 Microphone (Long)

- Gooseneck microphone with two flexible sections
- Unidirectional electret condenser microphone
- Red lights ring to display talk released
- XLR-4-32 connector
- Sensitivity:-37 dB (1 kHz, 0 dB = 1 V / PA)
- Frequency response: 100 Hz - 13 kHz
- Length: 620 mm



### TS-907 Infrared Transmitter/Receiver

- Communication between the Central Unit and Chairman/Delegate Unit performed by means of infrared signals
- Variety of mounting methods: ceiling, wall and microphone stand
- Designed for high ceiling applications, e.g. ceiling height 5.0 - 7.0m (16.4 - 22.97ft)

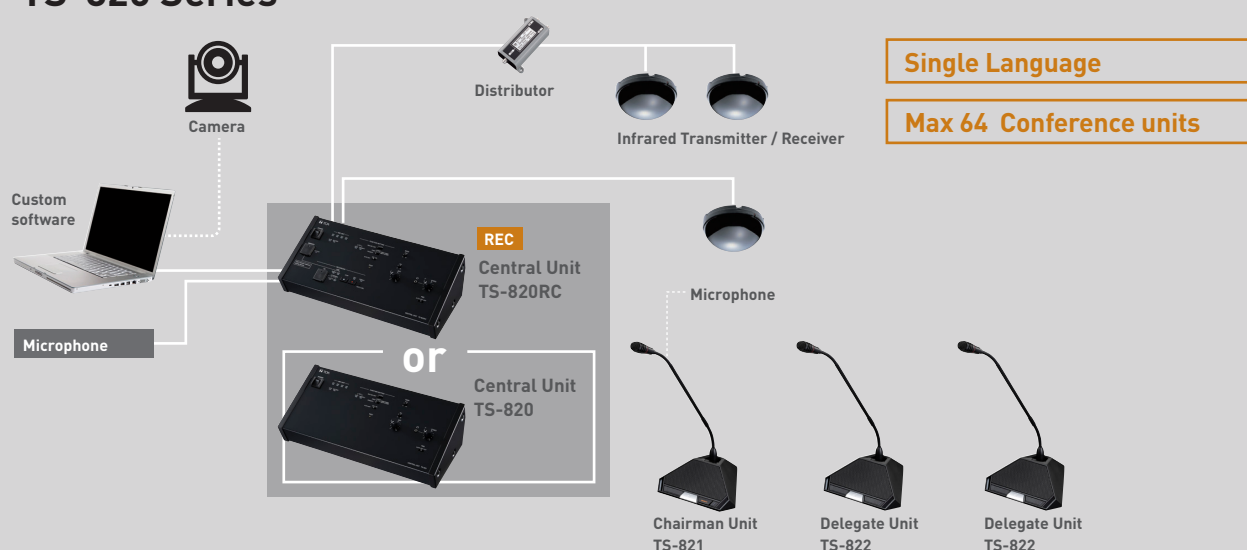


### TS-905 Infrared Transmitter/Receiver

- Communication between the Central Unit and Chairman/Delegate Unit performed by means of infrared signals
- Variety of mounting methods: ceiling, wall and microphone stand
- Designed for low ceiling applications, e.g. ceiling height 2.5 - 4.5 m (8.2 - 14.76ft)



# TS-820 Series



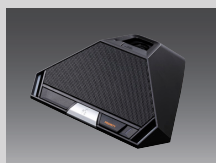
## TS-820RC Central Unit with recording function

- Main unit of the system
- Up to 64 conference unit controllable
- Mic In, AUX In, Line Out, Rec Out, Headphone monitor out, EQ in/out
- Recording capability to USB and internal memory
- Function setting – Number of open microphones, Auto mic-off function, Speech priority selector, Feedback suppressor
- Rack-mountable with MB-TS920 optional bracket



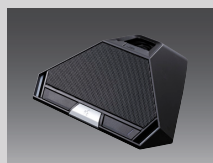
## TS-820 Central Unit

- Main unit of the system
- Up to 64 conference units controllable
- Mic In, AUX In, Line Out, Rec Out, Headphone monitor out, EQ in/out
- Function setting – Number of open microphones, Auto mic-off function, Speech priority selector, Feedback suppressor
- Rack-mountable with MB-TS920 optional bracket



## TS-821 Chairman Unit

- Chairman unit for basic discussion
- Priority button
- 0.2W monitor speaker
- 2 headphone jacks with individual volume control
- Approx. 10 hours continuous operation with the use of optional rechargeable lithium-ion battery



## TS-822 Delegate Unit

- Delegate unit for basic discussion
- 0.2W monitor speaker
- 2 headphone jacks with individual volume control
- Approx. 10 hours continuous operation with the use of optional rechargeable lithium-ion battery



## YW-1022 Distributor

- Signal distributor used to expand the number of connectable Infrared Transmitter/Receiver units
- For 2-branch distribution



## YW-1024 Distributor

- Signal distributor used to expand the number of connectable Infrared Transmitter/Receiver units
- For 4-branch distribution



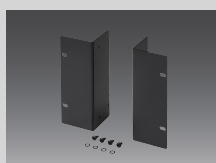
## BP-900A Rechargeable Lithium-ion Battery

- Designed for use with the Chairman/Delegate Units
- Nominal Voltage: 7.2 VDC
- Weight: 95 g



## BC-900 Battery Charger

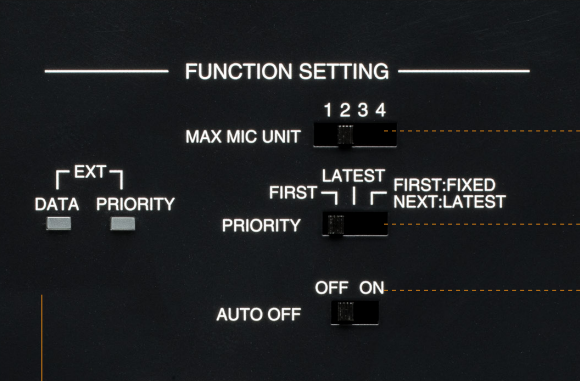
- Dedicated battery charger for the BP-900A
- Permits up to 8 batteries to be simultaneously charged within up to 5 hours
- Finish: Steel, black, paint
- Weight: 1.2 kg



## MB-TS920 Rack Mounting Bracket

- Designed for exclusive use with TS-820, TS-820RC and TS-920RC.

# Key Functions



- 1 Selectable number of open microphones
- 2 Three of microphone operating modes
- 3 Mic auto-off function automatically turns off the mic after 30-second silence



- 4 2-language conference capability  
\*TS-920 Series only



- 5 3-choice voting function for quick voting and vote counting  
\*TS-920 Series only



## Built-in audio recording

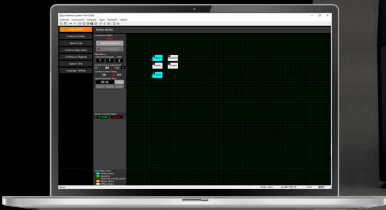
Conference can be recorded in mp3 format on a widely available USB memory or internal memory.  
\*When TS-820RC or TS-920RC is used.



\*Free software available.



\*The image is for illustration purpose only.



## External Control

Available remote control protocol enables conference operation on custom-made software as well as integration with other devices such as cameras.

